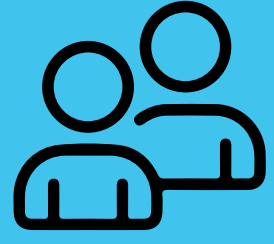


# SAFETY ON SHORE LEAVE



Do not go ashore alone. Partner with a shipmate; there is strength in numbers!

Be aware of your surroundings; stay in well-lit populated areas.



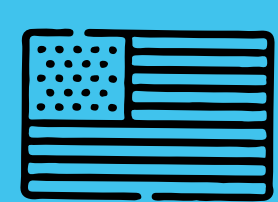
Keep valuables concealed; do not openly show large amounts of money.

Walk quickly and confidently, have a plan.



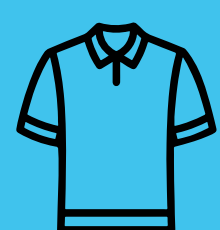
Take the phone numbers of the ship and agent with you ashore; know how to call for help.

Follow your company's drug & alcohol policy.



In a foreign country, know the phone number and address of the U.S. Embassy.

Always watch for suspicious behavior.



Don't stand out, dress casually and try to blend in with the locals.

If you do experience violence while onshore, it is not your fault. We encourage you to seek out support and report the incident to your employer.



You are not alone!  
Scan here for support  
and reporting resources



[www.socp.us](http://www.socp.us) **Catalyst for Change™** Partner with us to make a difference™

This material is based on work supported by the U.S. Department of Transportation Maritime Administration under Agreement No. 693JF72250012. For further information and disclaimers, see the Best Practices Guide at [www.socp.us](http://www.socp.us).

# SAFETY ON SHORE LEAVE



Do not go ashore alone. Partner with a shipmate; there is strength in numbers!



Be aware of your surroundings; stay in well-lit populated areas.



Keep valuables concealed; do not openly show large amounts of money.



Walk quickly and confidently, have a plan.



Take the phone numbers of the ship and agent with you ashore; know how to call for help.



Follow your company's drug & alcohol policy.



In a foreign country, know the phone number and address of the U.S. Embassy.



Always watch for suspicious behavior.



Don't stand out, dress casually and try to blend in with the locals.



If you do experience violence while onshore, it is not your fault. We encourage you to seek out support and report the incident to your employer.



You are not alone!  
Scan here for support  
and reporting resources



[www.socp.us](http://www.socp.us) **Catalyst for Change™** Partner with us to make a difference™

This material is based on work supported by the U.S. Department of Transportation Maritime Administration under Agreement No. 693JF72250012. For further information and disclaimers, see the Best Practices Guide at [www.socp.us](http://www.socp.us).